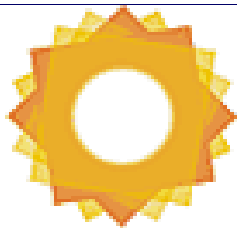


**SAN JUAN**  
**GOBIERNO**



**INTA**

**Proyecto: Desarrollo Agrícola y  
Gestión del Área Bajo Riego del  
Canal del Norte - 25 de Mayo en la  
Provincia de San Juan.**

**GRUPO DE TRABAJO SOBRE RIEGO Y DRENAJE**



**PROYECTO “CANAL DEL NORTE”**  
**PRIMEROS RESULTADOS DE LA**  
**RED FREATIMETRICA – SAN JUAN**

# PROVINCIA DE SAN JUAN

Tierra del Sol y el buen Vino

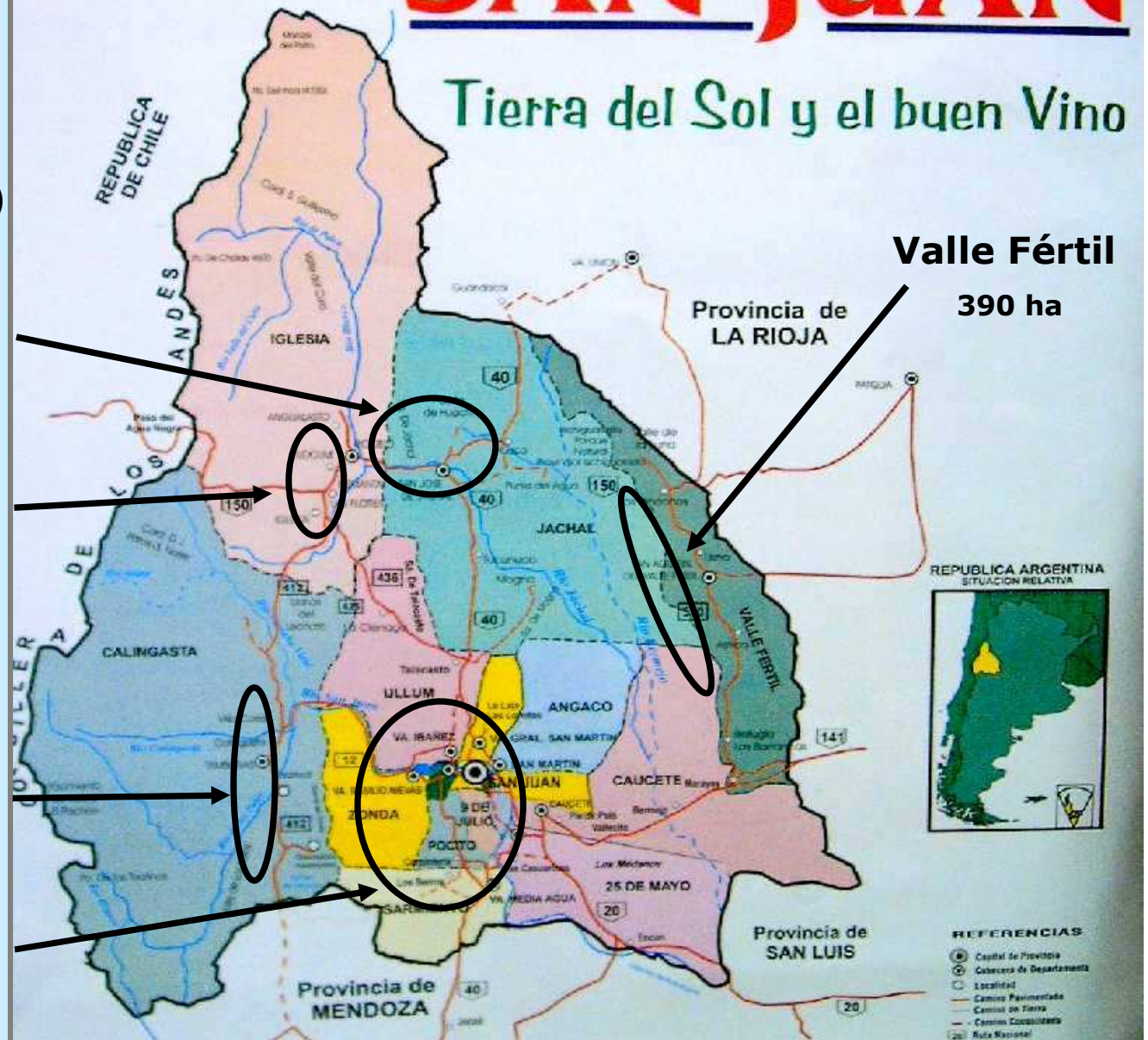
Sup. Cultivada (ha)

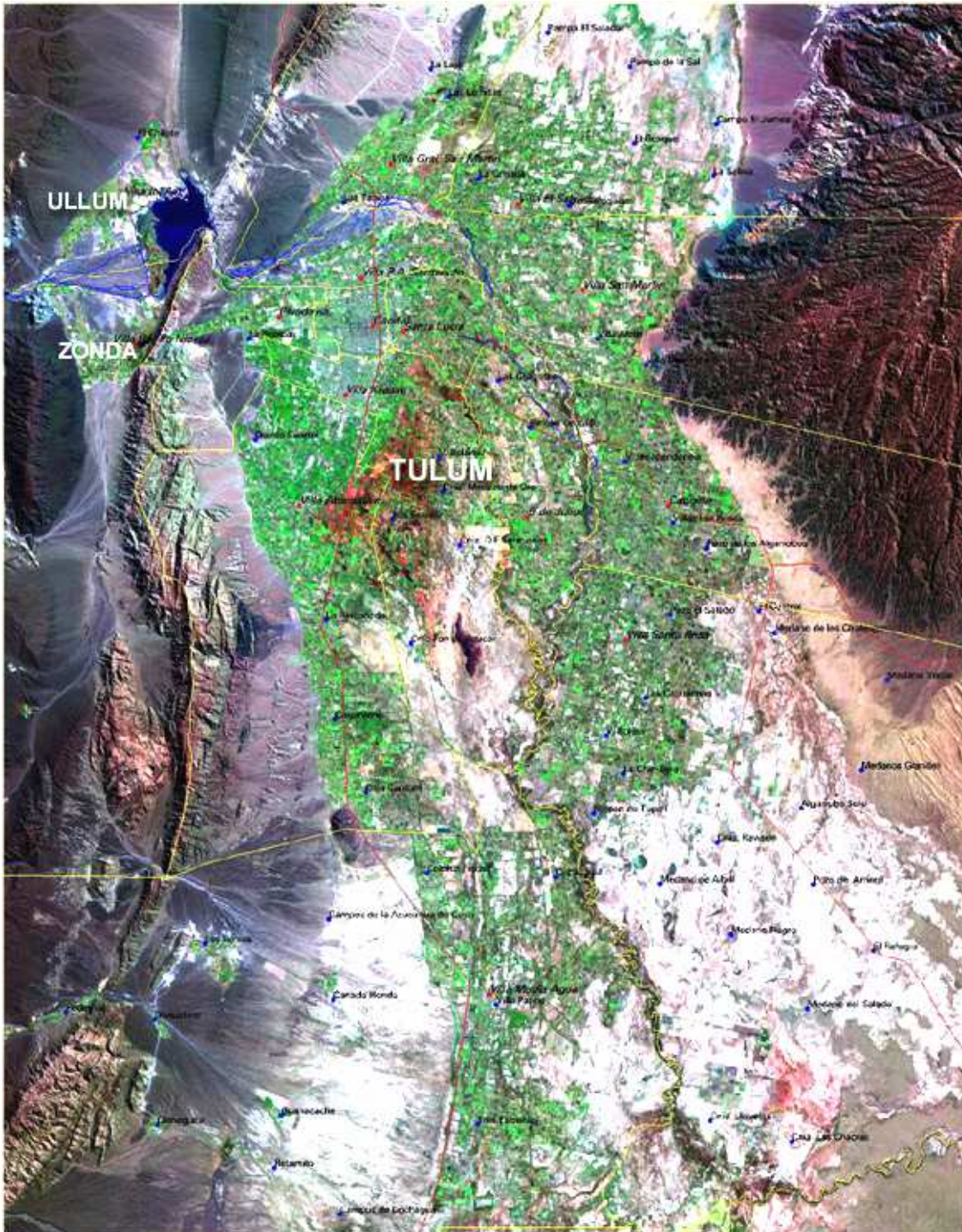
Jáchal  
5247 ha

Iglesia  
1837 ha

Calingasta  
4338 ha

Tulum-Ullum-Zonda  
67850 ha





## Valles de Tulum y Ullum-Zonda

Sup. Empadronada:  
118.952 ha

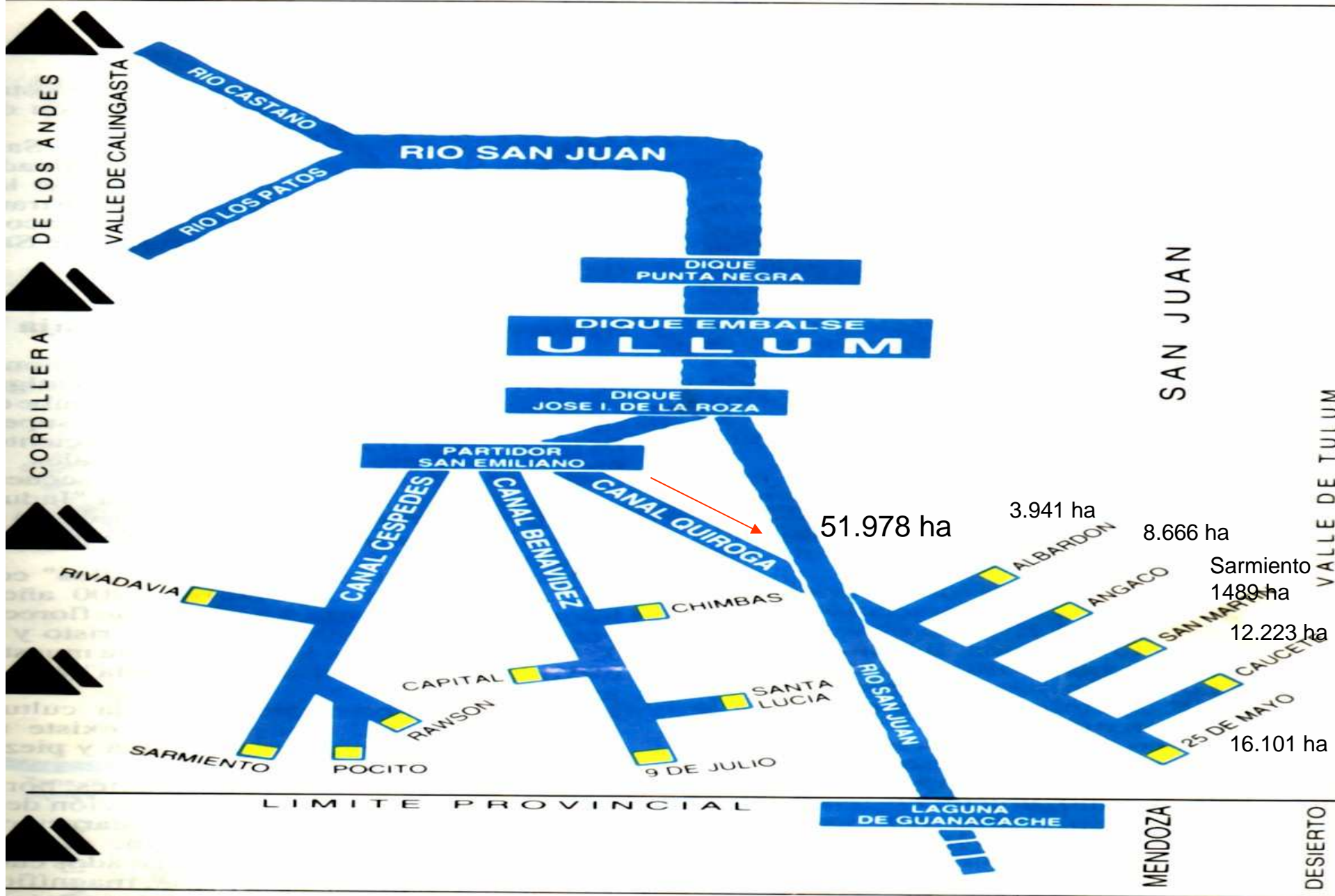
- Sup. Cultivada:  
67.850 ha

- **Cultivos principales:**

- VID: 43.860 ha
- OLIVO: 13.610 ha
- FRUTALES: 3100 ha
- HORTALIZAS: 6.667 ha
- SEMILLAS: 612 ha

**Fuente: Censo Nac. Agrop.  
2002**

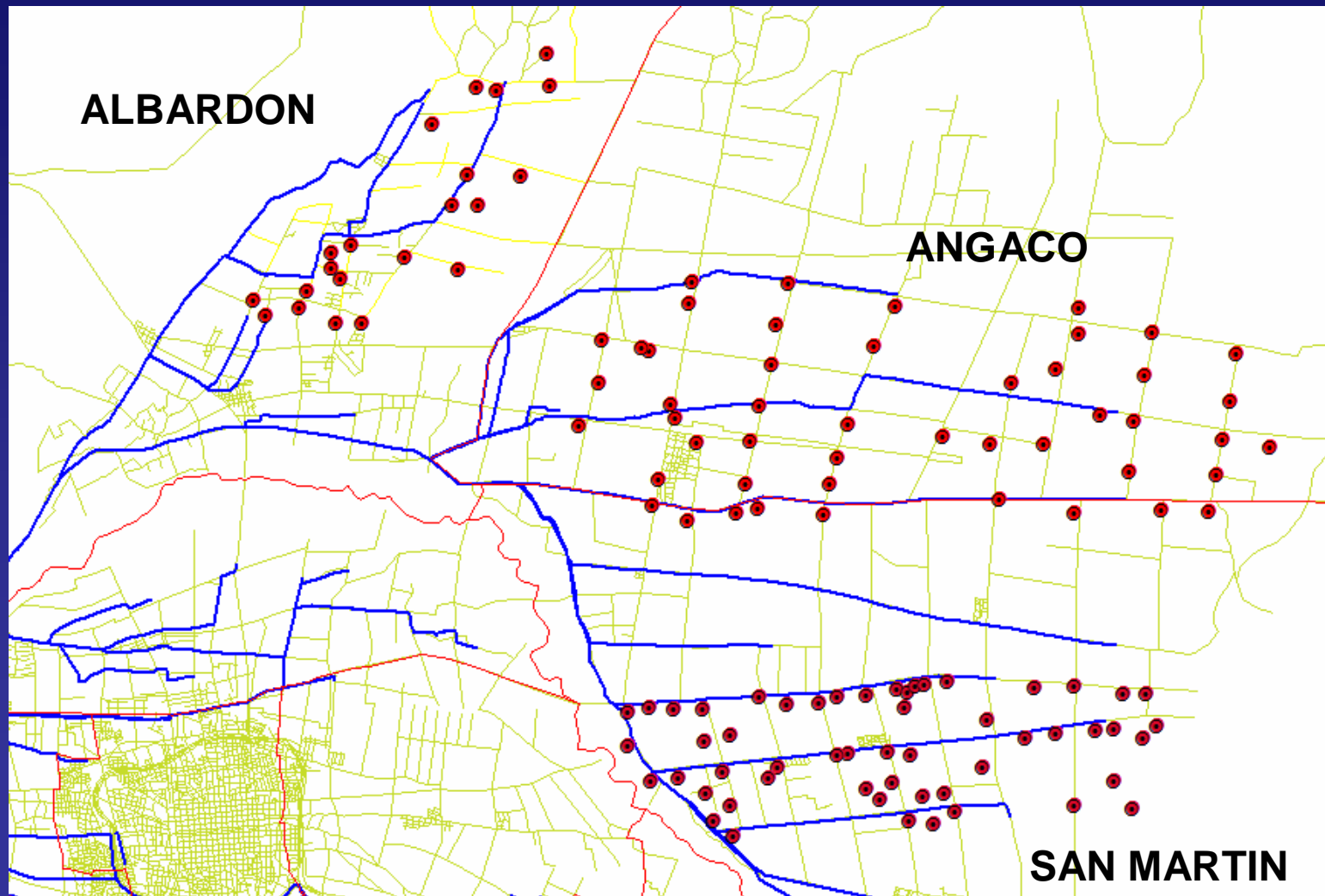
# SISTEMA DE RIEGO





# FREATIMETRIA – SAN JUAN

## SAN MARTIN – ANGACO - ALBARDON



## Freatímetros por Departamento

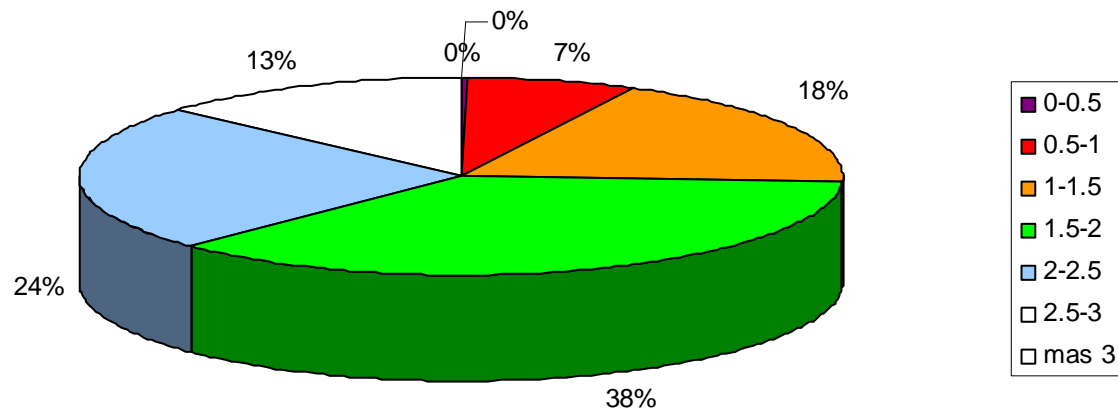
Departamento	n <sup>a</sup> Freatímetros	Sup. Total (ha)	ha/freat.
San Martín	63	4.732,03	75,11
Angaco	50	10.224,27	204,49
Albardón	32	4.809,81	150,31
<b>Totales=</b>	<b>145</b>	<b>19.766,11</b>	<b>136,32</b>



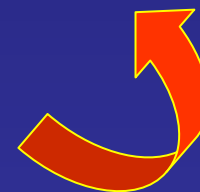
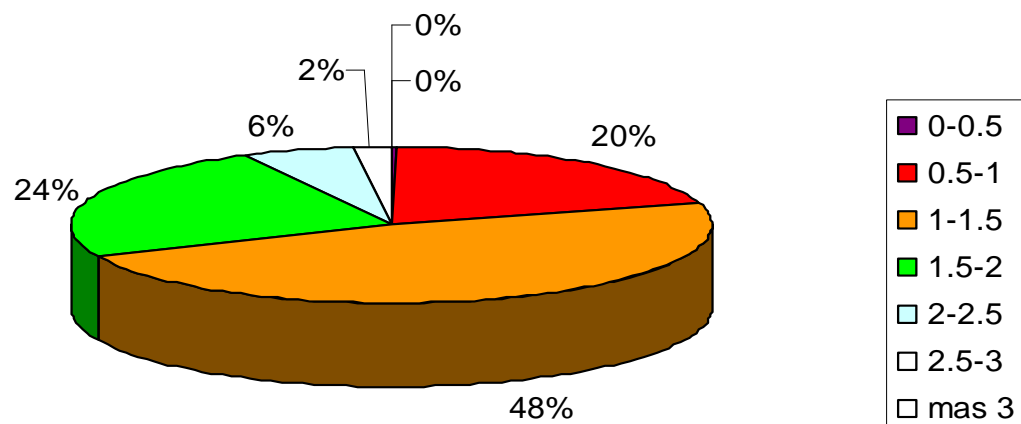
# FREATIMETRIA – ALBARDON



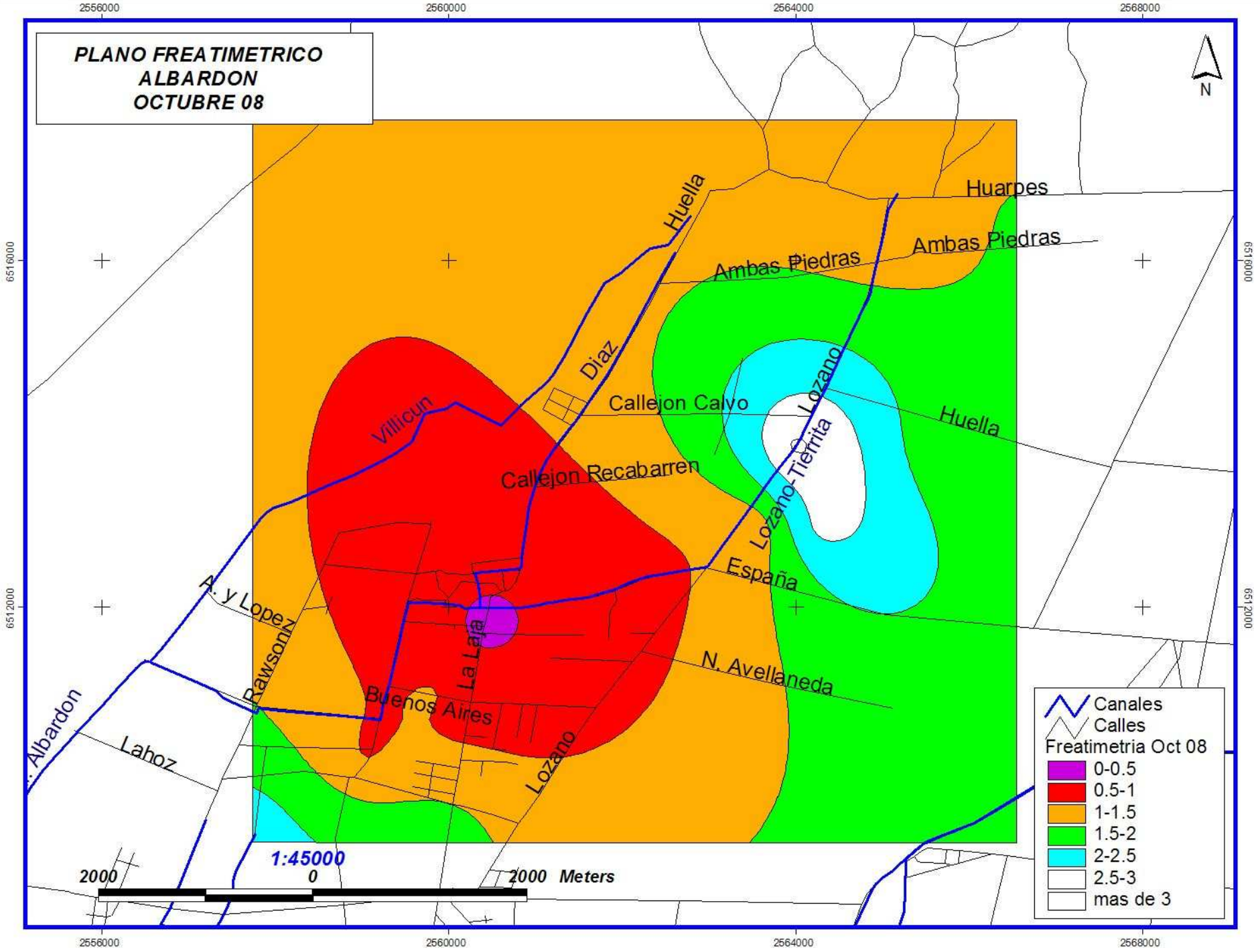
FREATIMETRIA ALBARDON (%CLASES)  
NOVIEMBRE 2008



FREATIMETRIA ALBARDON (%CLASES)  
OCTUBRE 2008



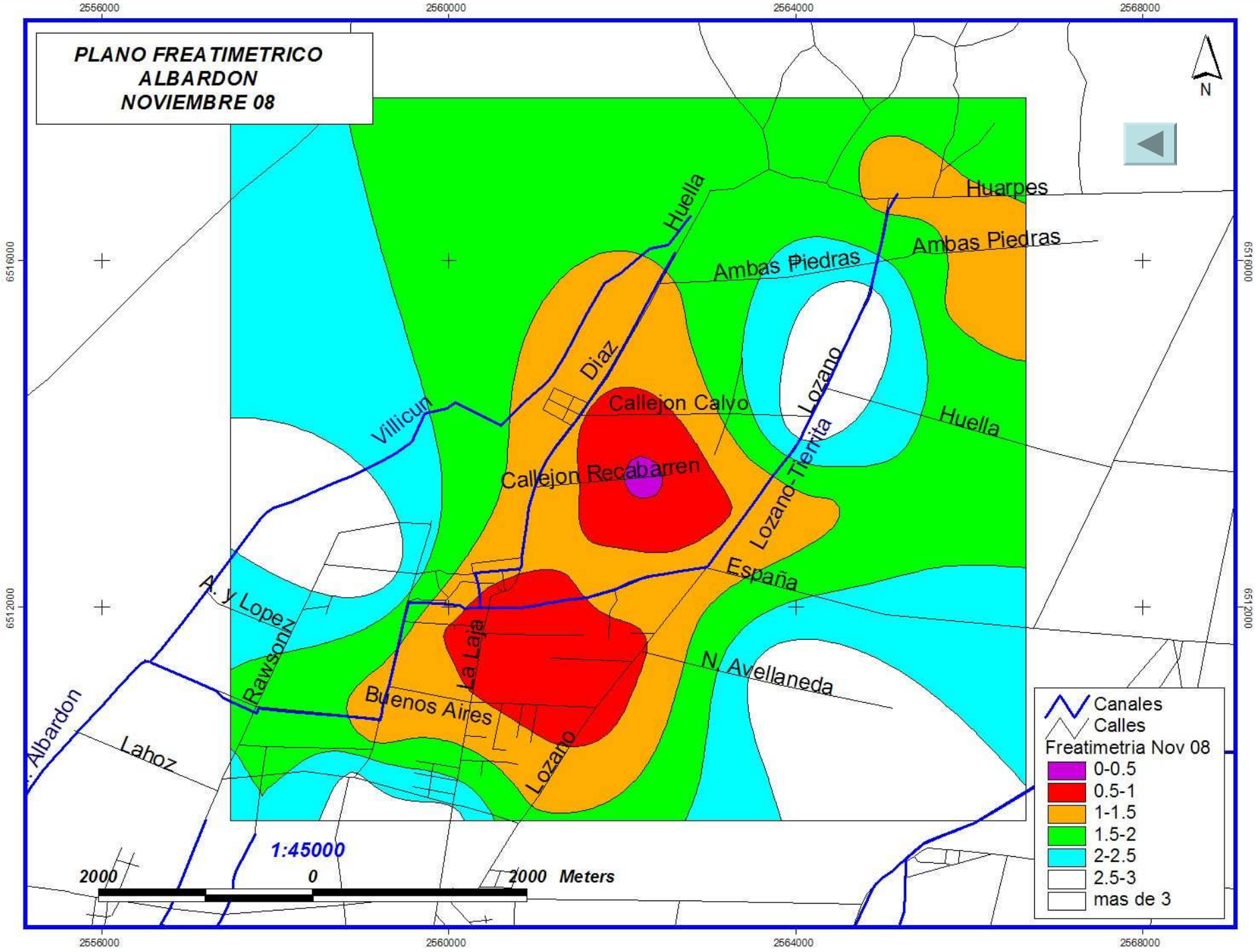
**PLANO FREATIMETRICO  
ALBARDON  
OCTUBRE 08**



Canales  
Calles  
Freatimetria Oct 08

- 0-0.5
- 0.5-1
- 1-1.5
- 1.5-2
- 2-2.5
- 2.5-3
- mas de 3

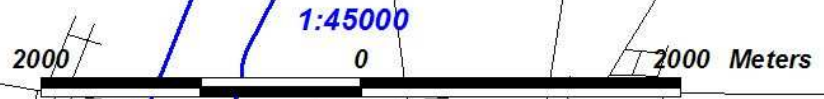
**PLANO FREATIMETRICO  
ALBARDON  
NOVIEMBRE 08**



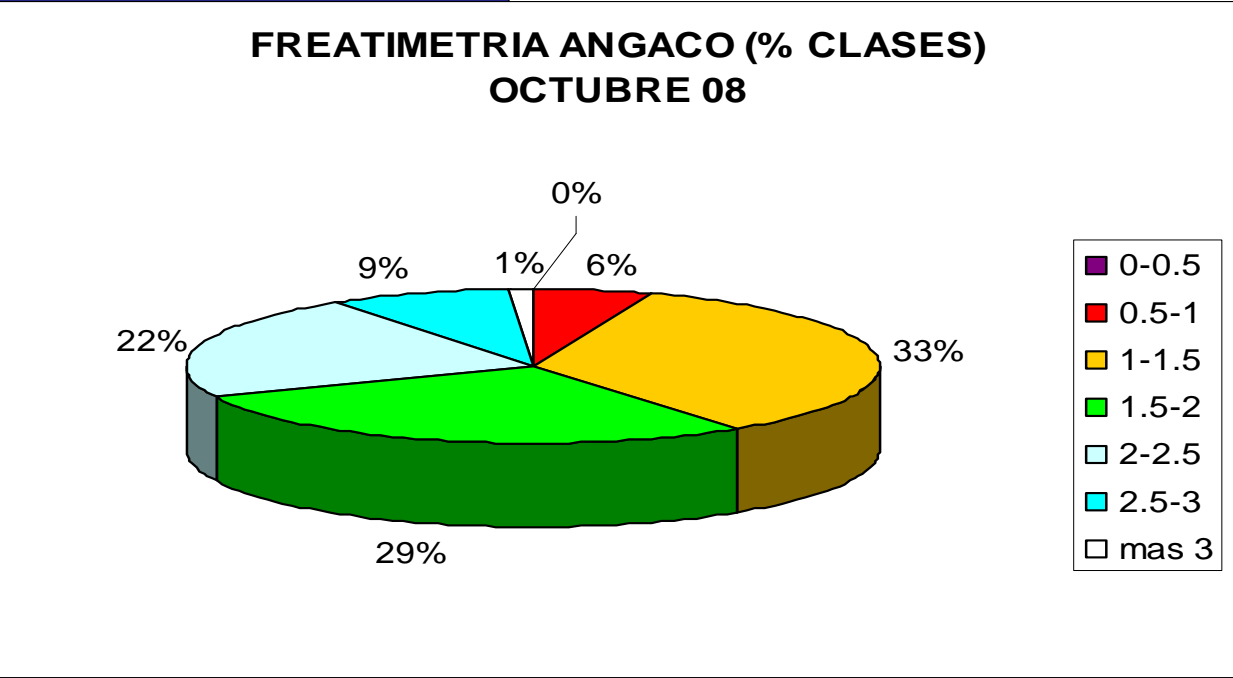
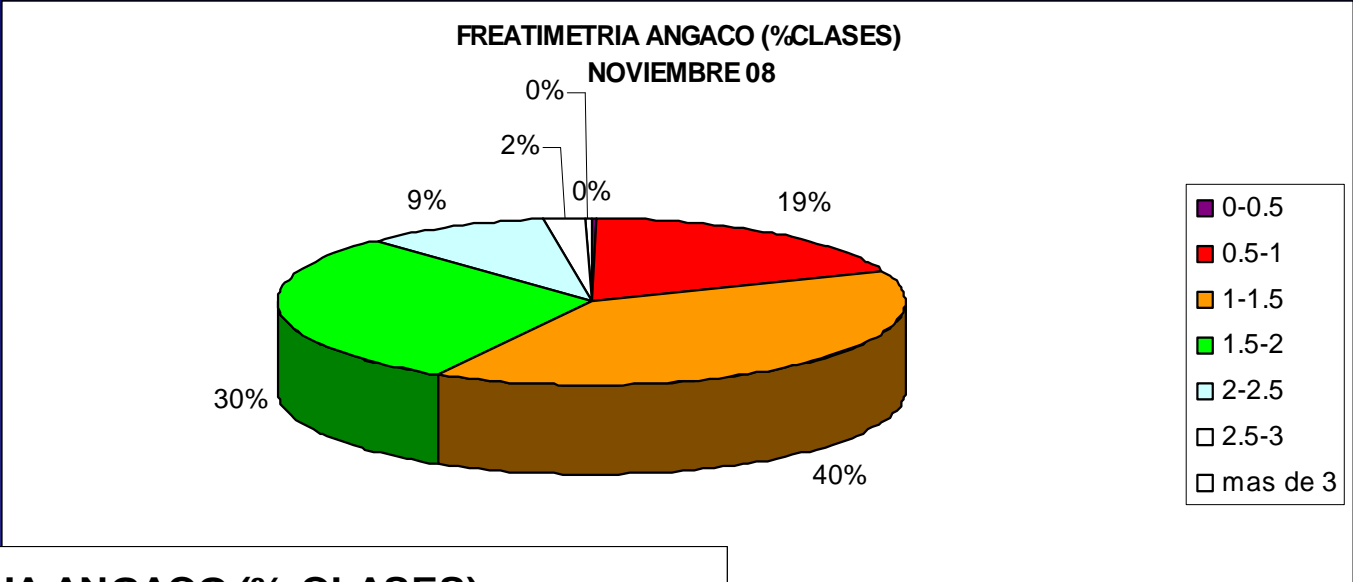
Canales  
Calles

Freatimetria Nov 08

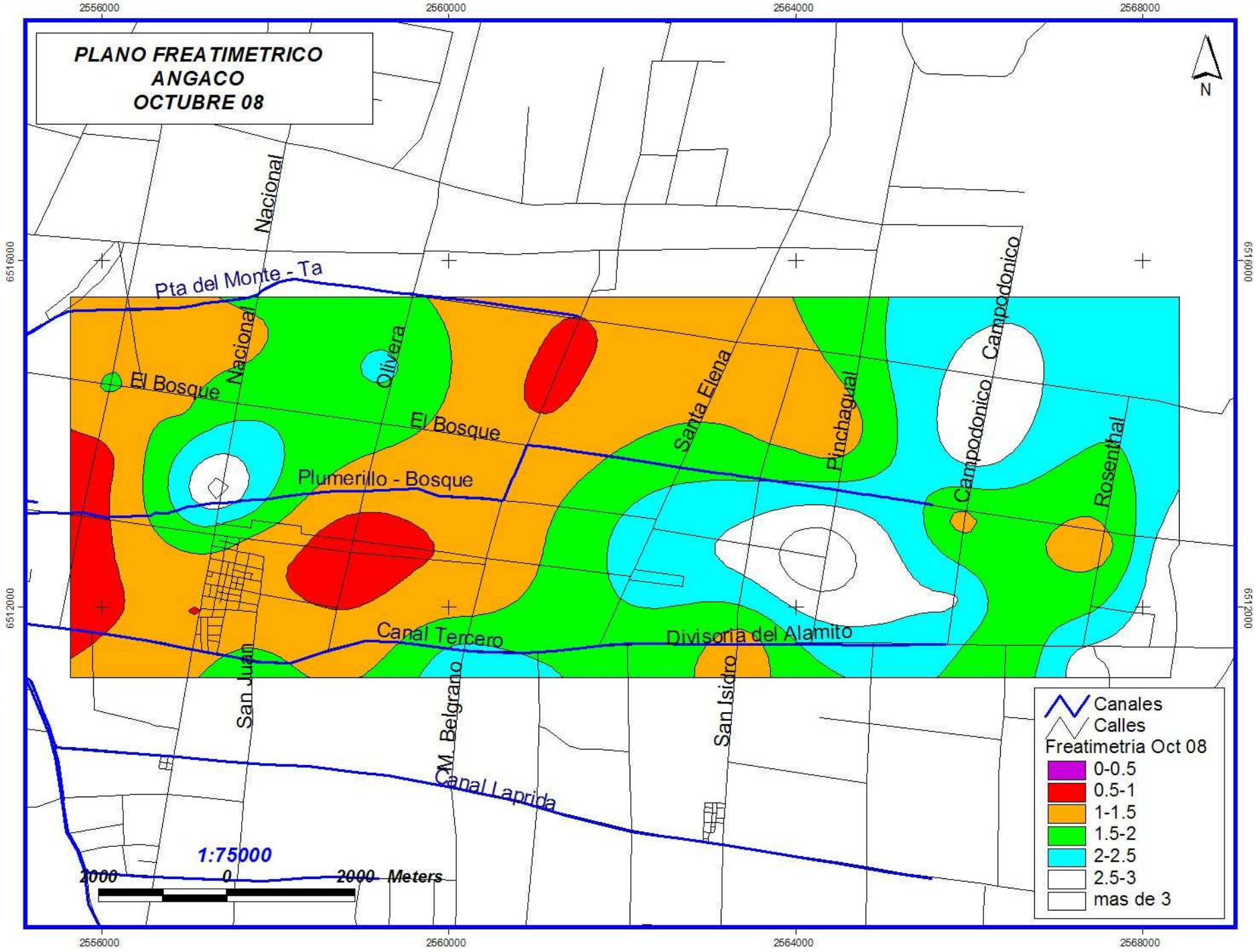
- 0-0.5
- 0.5-1
- 1-1.5
- 1.5-2
- 2-2.5
- 2.5-3
- mas de 3



# FREATIMETRIA – ANGACO



**PLANO FREATIMETRICO  
ANGACO  
OCTUBRE 08**



Legend:

- Canales (Blue line symbol)
- Calles (Black line symbol)
- Freatimetria Oct 08
- 0-0.5 (Purple color)
- 0.5-1 (Red color)
- 1-1.5 (Orange color)
- 1.5-2 (Green color)
- 2-2.5 (Cyan color)
- 2.5-3 (White color)
- mas de 3 (White with black outline)

2556000

2560000

2564000

2568000

**PLANO FREATIMETRICO  
ANGACO  
NOVIEMBRE 08**

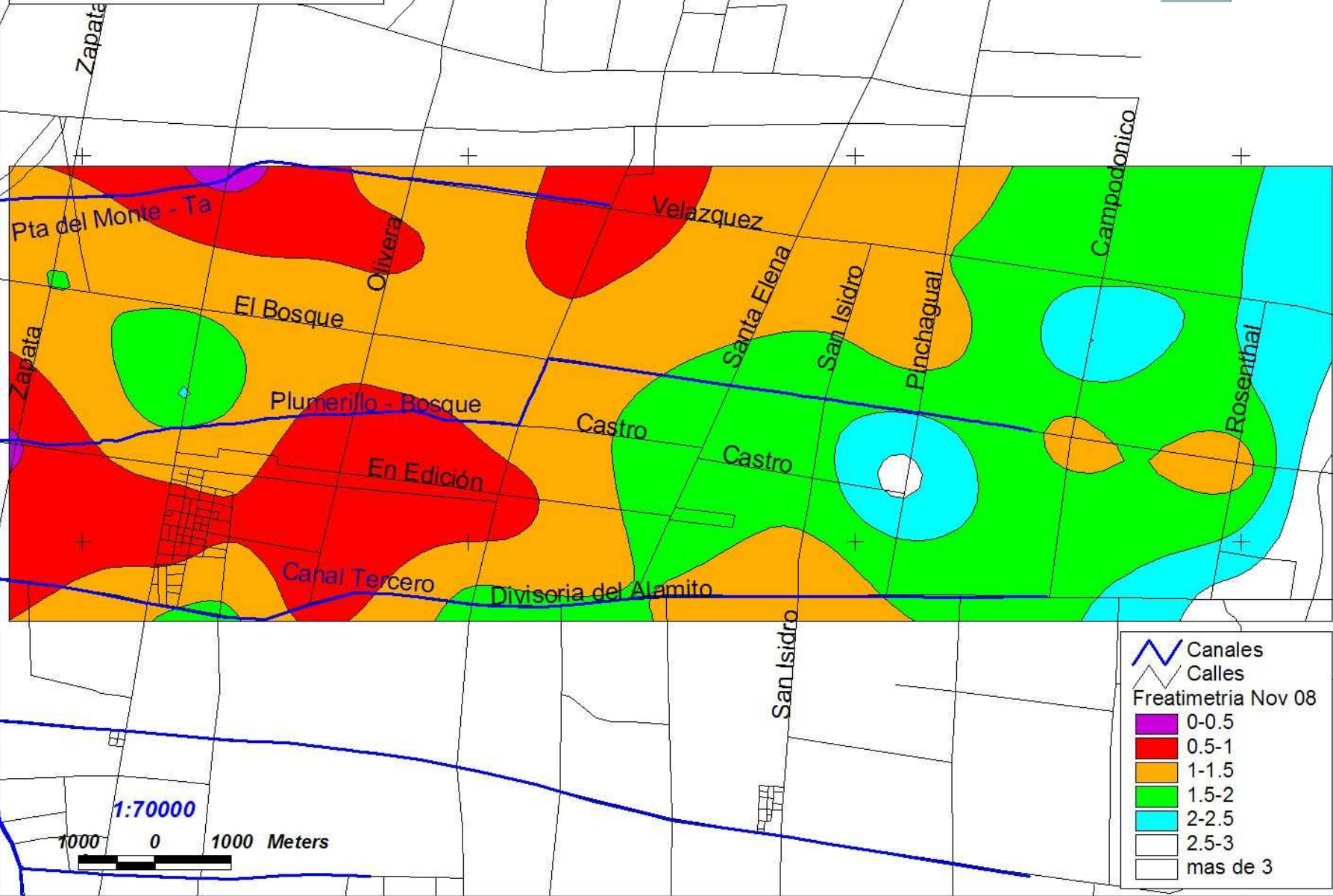











6516000

6518000

6512000

6514000



 Canales  
 Calles  
**Freatimetria Nov 08**  
 0-0.5  
 0.5-1  
 1-1.5  
 1.5-2  
 2-2.5  
 2.5-3  
 mas de 3

1:70000



2556000

2560000

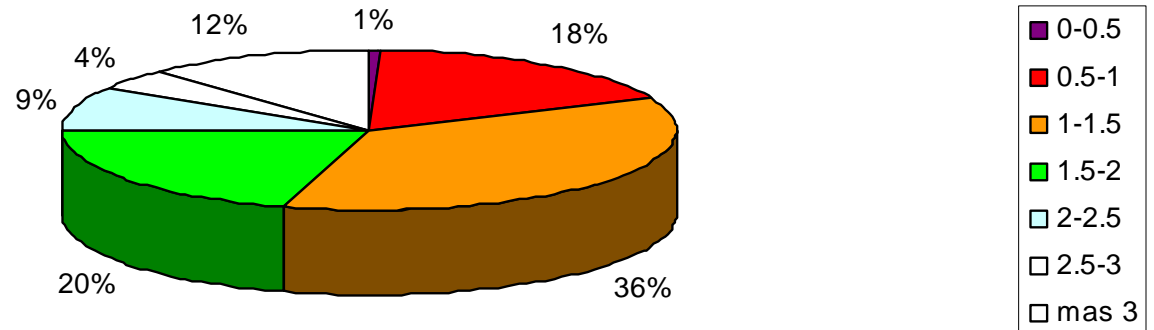
2564000

2568000

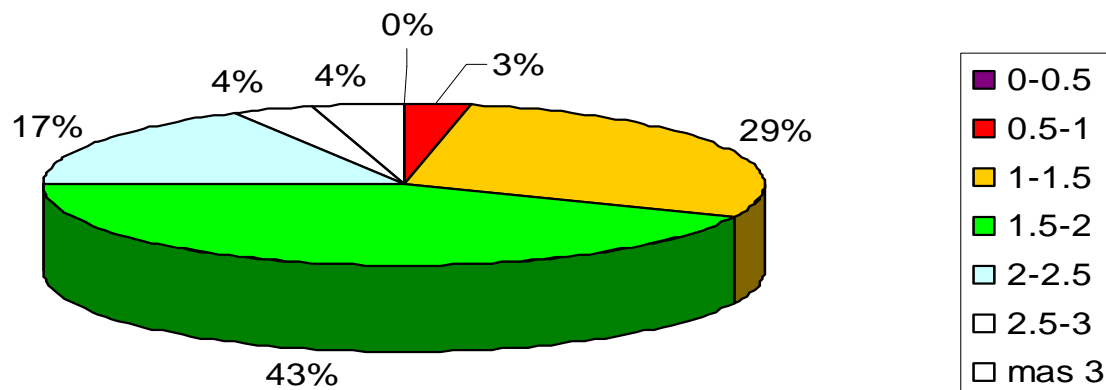
# FREATIMETRIA – SAN MARTIN



FREATIMETRIA SAN MARTIN (%CLASES)  
NOVIEMBRE 08



FREATIMETRIA SAN MARTIN (%CLASES)  
OCTUBRE 08



2556000

2560000

2564000

2568000

**PLANO FREATIMETRICO  
SAN MARTIN  
OCTUBRE 08**

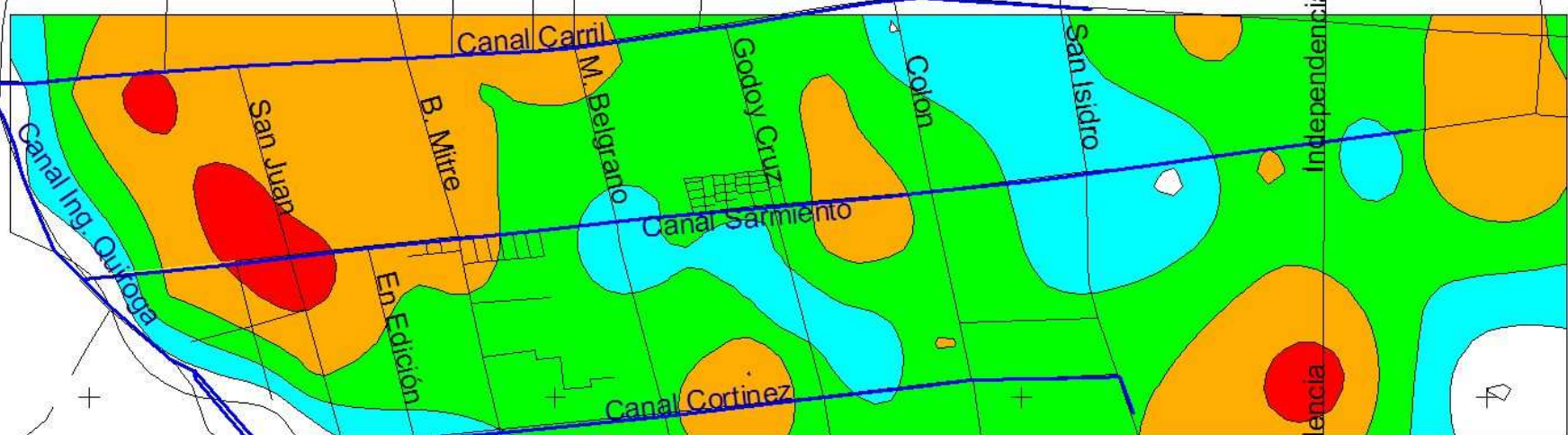




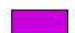
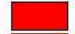





6516000

6518000

6512000

6512000



 Canales  
 Calles  
**Freatimetria Oct 08**  
 0-0.5  
 0.5-1  
 1-1.5  
 1.5-2  
 2-2.5  
 2.5-3  
 mas de 3

1:55000



2556000

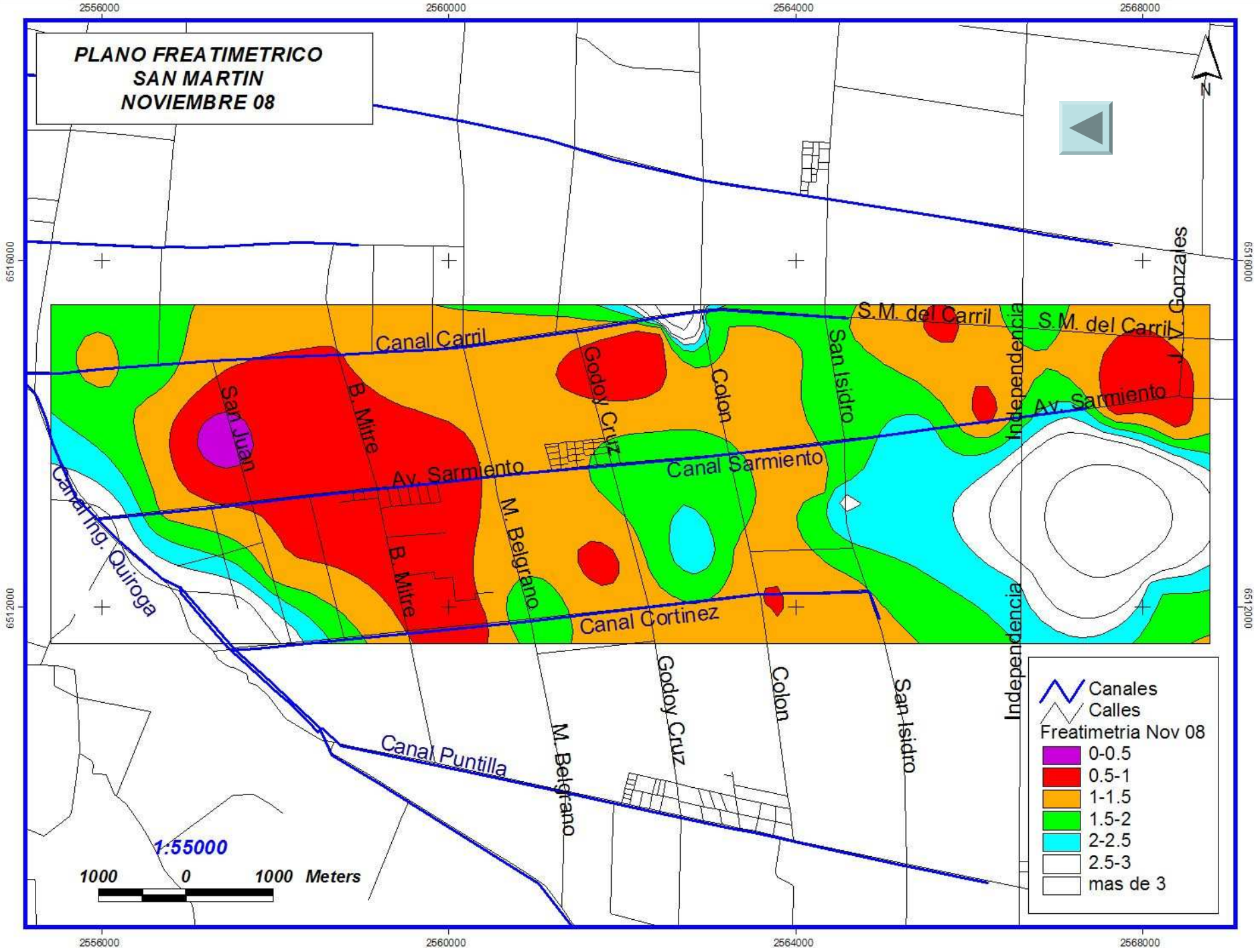
2560000

2564000

2568000



**PLANO FREATIMETRICO  
SAN MARTIN  
NOVIEMBRE 08**



1:55000  
1000 0 1000 Meters

Canales  
Calles

Freatimetria Nov 08

- 0-0.5
- 0.5-1
- 1-1.5
- 1.5-2
- 2-2.5
- 2.5-3
- mas de 3

**Diferencia de superficie afectada por freática entre  
octubre a noviembre 2008**

	<b>Albardón</b>	<b>Angaco</b>	<b>San Martín</b>
<b>CLASES</b>	<b>Total (ha)</b>	<b>Total (ha)</b>	<b>Total (ha)</b>
0-0.5	-8,157	32,528	30,732
0.5-1	-599,366	1342,091	772,086
1-1.5	-1377,525	479,458	481,457
1.5-2	660,850	160,856	-1018,225
2-2.5	942,607	-1283,17	-340,01
2.5-3	581,487	-654,106	36,933
mas 3		-76,909	424,011
<b>Incremento</b>	<b>2184,944</b>	<b>2014,933</b>	<b>1284,275</b>